



Medison SonoAce R5

ULTRASOUND
VUE

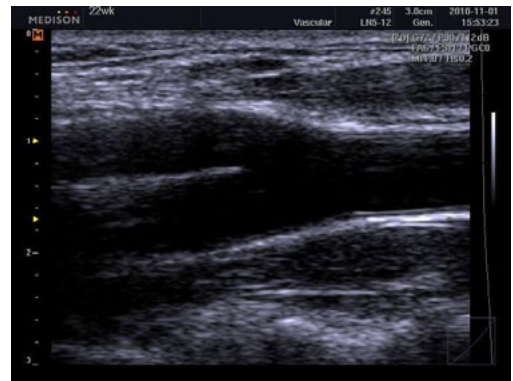
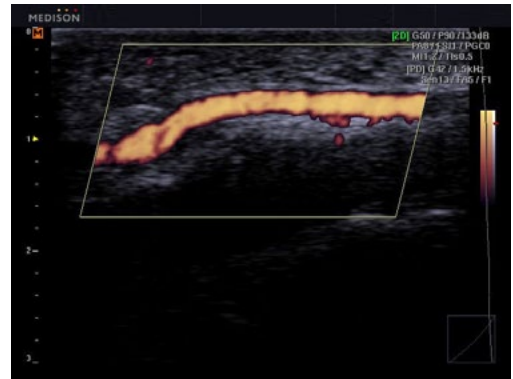
Medison SonoAce R5

Imaging modes

B-Mode
M Mode
Color M mode
Power Doppler
Color Doppler
PW Doppler
Duplex
Triplex
Surface 3D

Features

- * 15" widescreen LCD monitor
 - * 3 probe ports
 - * Height adjustable backlit keyboard
 - * Stereo speakers
 - * Programmable keys
 - * Hi-resolution Zoom
 - * THI [Tissue Harmonic Imaging]
 - * Pulse Inversion Harmonic Imaging
 - * Extreme High Dynamic Range
 - * Trapezoidal Imaging
 - * 1152 Channels
-
- * FSI™ [Full Spectrum Imaging]
 - * SRF™ [Speckle Reduction Filter]
 - * HPRF [High Pulse Repetition Frequency]
 - * QuickScan [Image optimization]



Features

- * Rapid-boot standby mode
- * Customizable measurement packages
- * Full Spectrum Imaging
- * SonoView Pro [Image management]
- * Thumbnail menu
- * CINE play & save
- * Storage manager
- * DICOM 3.0
- * 2 USB ports
- * 160 GB hard drive
- * Video in & out ports
- * 2 button footswitch

Options

Cardiac package

PW Doppler

Color Doppler

Power Doppler

Probes

Convex probe CN2-8 [2 - 8 MHz]

Convex probe C2-8 [2 - 8 MHz]

Microconvex probe C2-4/20 [2 - 4 MHz]

Microconvex probe CN4-9 [4 - 9 MHz]

Endocavity probe EC4-9 [4 - 9 MHz]

Endocavity probe EVN4-9 [4 - 9 MHz]

Linear probe LN5-12/40 [5 - 12 MHz]

Linear probe L5-12/60 [5 - 12 MHz]

